

TO SVR FINANCE COMMITTEE:

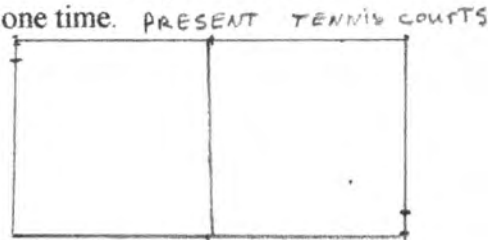
The Tennis Club believes that it is time to begin to implement a portion of its Master Plan for the expansion of racquet sports. Our membership has increased this year to approximately 60 members who feel that the addition of four new courts, two of which could be used for the fast-growing game of Pickle Ball, would be in order. They could be located below the present two courts to form a racquet sport complex. (See drawing below)

Pickle Ball is related to tennis but is primarily played by families with two or four players per court. It is easy to learn and easy on the body for older players. This rapidly growing sport is already a part of the Huntsman Games at St. George, Utah, and has been proposed for future Olympics.

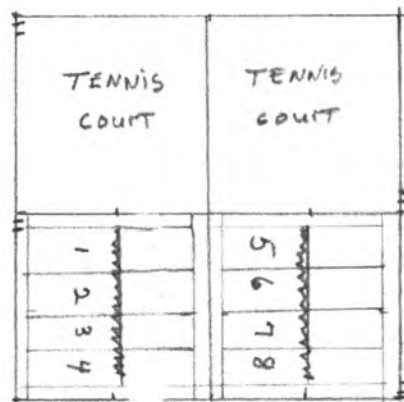
Some towns have applied for a grant to fund half the cost of courts through a federal agency dealing with recreation expansion. The Tennis Club has over \$12,000 in the Tennis Allocated Fund that could be contributed to the project.

Approximate cost for the tennis courts is \$100,000 per court plus \$10,000 for fencing and court markings. Approximate cost for pickle ball courts is \$110,000 per eight pickle ball courts plus \$15,000 for fencing and court markings. The eight pickle ball courts could also be used as two tennis courts.

Both the tennis courts and pickle ball courts would need leveling, packing, blacktopping, and composition materials. The project could be done in stages, but if federal funds would be forthcoming, the whole project could be completed at one time.



HILL BETWEEN COURTS



EIGHT PICKLE BALL Games can be played at one time PERIOD ON TWO PICKLE BALL COURTS

Stan DuFrane, SVR Tennis Club President

Stan DuFrane

STAR VALLEY RANCH TENNIS COMPLEX

The Star Valley Ranch Tennis Club wishes to present a preliminary plan for tennis facilities to be constructed on the site and adjacent to the present tennis courts near the Aspen Hills Office.

GOAL

Our goal is to substantially upgrade and expand the tennis facilities on the Ranch to provide more attractive and functional courts, centrally located, for a greatly enlarged tennis program. We would seek to attract far more players of all ages. There would be a formal children's/junior's program, enlarged casual play schedules for adults and seniors, men's and women's leagues and ladders, club championship competitions, and tournaments attracting non-ranch players.

The existing tennis club has begun to grow rapidly and expects to have significantly larger membership as greater numbers of people, particularly families and younger adults move to the Ranch. We are already seeing a much higher level of interest and skill among our membership. It is our expectation shortly to function very similarly to the existing Men's and Ladies' Golf Associations. As the only organized group now representing tennis players, we offer this preliminary plan for consideration. It seems to us that substantially more sports and leisure activities will be demanded and need to be provided here in the near future. It is important that these facilities be attractive, safe, and available as much as possible to our residents. It is highly desirable, but perhaps not necessary that these operations be carried on profitably from the start.

DESCRIPTION OF FACILITIES

The facility should include six courts, to accommodate the much greater usage we envision, and six courts are almost a requirement to hold even simple area tournaments. One court should have seating, the others, because of relative elevation, are fairly well viewed from the surrounds. The site of the existing courts poses serious elevation challenges and some significant retaining walls will be needed for any recreational development of the plot. There needs to be cart and pedestrian access to the courts.

Facilities should include a small pro-shop sort of building, staffed for safety and compliance reasons, and, if the courts are open to the public as our golf courses are, to collect fees and schedule play. For tournament purposes, the complex needs to have some locker/shower facilities. A hot Jacuzzi attracts many more players, particularly older ones. If we are successful at making tennis a much greater part of SVR lifestyle, as we think we can, numbers of people at the facilities may justify a snack shop and overlook deck.

The non-stadium courts should be wind-screened on their East and West sides to provide maximum playable hours. The breath-taking North/South views

should not be obscured. One court^{or two} might be surfaced in the softer materials which are preferred by some older players.

The courts, now and in the future, should be made accessible via automatic flash card system, whereby players could use season passes or "punch card" passes to enter the courts when office personnel are not available. Some marshalling would be required from time-to-time to ensure all players had properly paid. We do not believe that the courts should be made fee-free. Because of the long periods of daylight hours here in the Valley, there is probably no serious need for court lights.

It is our experience and belief that an attractive, first or second-tier tennis facility greatly enhances a community's lifestyle and adds immensely to its appeal and property value. Unlike a golf course, this type of tennis complex lends itself well to construction in stages when funds are limited. While initial costs are far from trivial, operating costs thereafter are a tiny fraction of those of golf facilities and should, within a few years, yield a very positive cash flow.

Stan DuFrane
Tennis Club President
307-883-4471

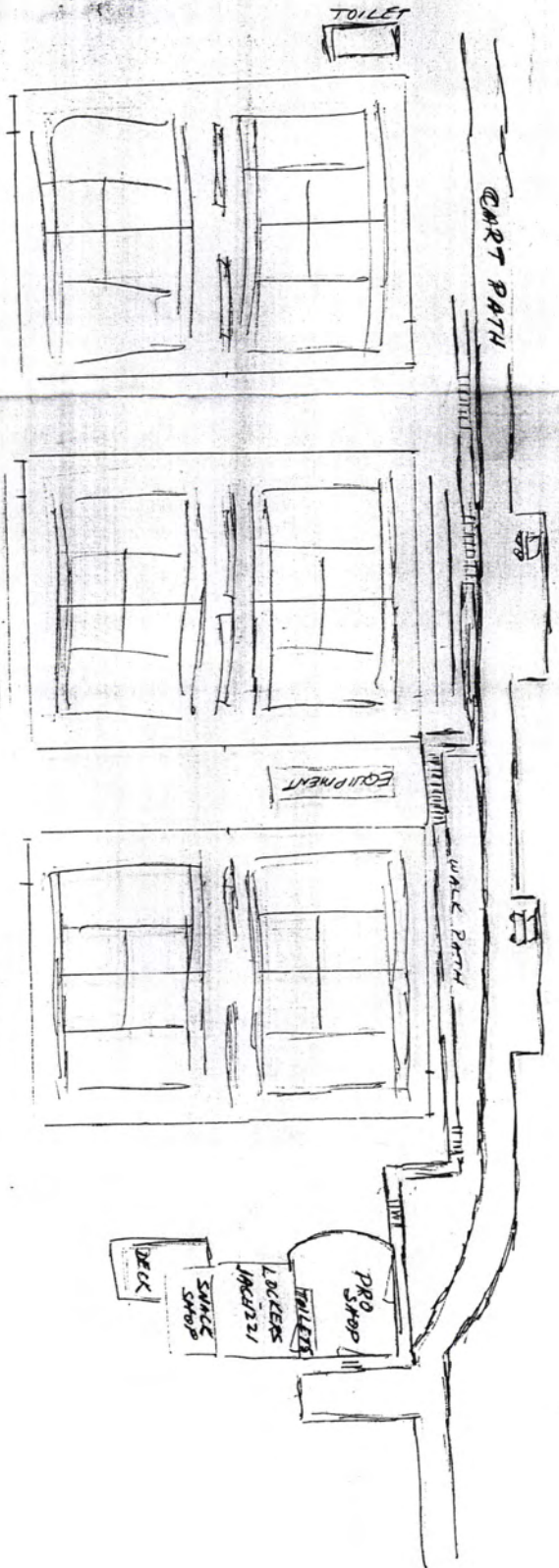
1. get tennis committee recognized - R. L.
2. ~~A.~~ Openly budget needs
 - a) backboard
 - b) fence repairs
 - c) surface repairs
 - d) net
 - e) squeegee
 - f) weed spray

Tom Mann - ct custodia

- 3) Tennis Club duties
- 4) {

- Capital investment fund for tennis ct replacement/upgrades

TO SOCCER FIELD &
EXERCISE TRAIL



COURT PATH

COURT 5-6

STADIUM
COURTS 3-4

COURTS 1-2

EQUIPMENT

WALK PATH

PRO SHOP

TOILET

LOCKERS

JACKETS

DECK

SUNLAMP SHOP

OFFICE



* 17EE