

ASPEN HILLS

ABOVE #9 HOLE

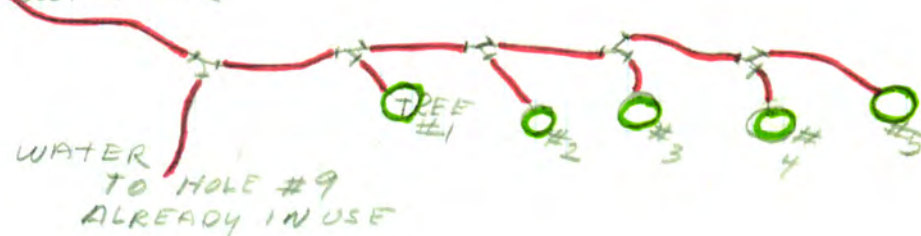
PROCEDURE

PLANT 5 PINE TREES

LOCATION - SEE DRAWING
CHOOSE 5 TREES - MATCH FOR
SIZE SHAPE and SPECIES
PLANT - SPACE BETWEEN TREES
AND CART PATH TO ALLOW
FOR COMMERCIAL MOWER.
WATER WITH HOSE FROM COOK
SHACK UNTILL TREES ARE
ESTABLISHED

USE LAWN HOSES WITH "Y" CONNECTION

COOKSHACK



LEAVE SOIL BASIN AROUND TREE
TRUNKS TO HOLD WATER

WATER REGULARLY
SMOOTH LANDSCAPE FOR MACHINE
MOWING

PROCEDURE

REPAIR CART PATH

LOCATION ALONG COOKSHACK
OBTAIN NEW NEEDED RAILROAD TIES,
REMOVE ROTTEN RAILROAD TIES and DISCARD.
PLACE REUSABLE TIES ON CART PATH.
DIG GOOD FOUNDATION FOR REPLACEMENT.
ALIGN NEW AND REUSABLE TIES ON
LEVEL BASE.

DRILL HOLES AND INSERT METAL RODS
OR EXTRA LONG SPIKES and/or
METAL FENCE POST (with FENCE
POUNDER) TO HOLD RRTIES IN LINE.
FILL SPACE BETWEEN TIES AND
CART PATH WITH GRAVEL AND TOP
SOIL AND TAMP TIGHTLY.

Rail Road TIES COULD BE UP TO 6 INCHES
HIGHER THAN EXISTING CART PATH.

NOTE: "THE ORIGINAL RAIL ROAD TIES
LASTED MORE THAN 30 YEARS.
REPLACEMENTS CAN LAST UNTIL
SVRA CAN AFFORD A NEW LOOK"

(OVER)

#1 PRIORITY
TAKES TIME FOR
TREES TO GROW

#2 PRIORITY
UNSIGHTLY FOR
EVERYONE PLAYING
ASPEN HILLS.

ASPEN HILLS

ABOVE #9 HOLE

CONTINUED

PROCEDURE

GREEN AREA BELOW CART PATH
ASPEN TREE GROUP

REMOVE OR CAP OLD WATER
CONNECTION, and COVER.

BRING IN TOP SOIL AND SMOOTH.

REMOVE DEBRIS

ADD WILD ROSE BUSHES AND

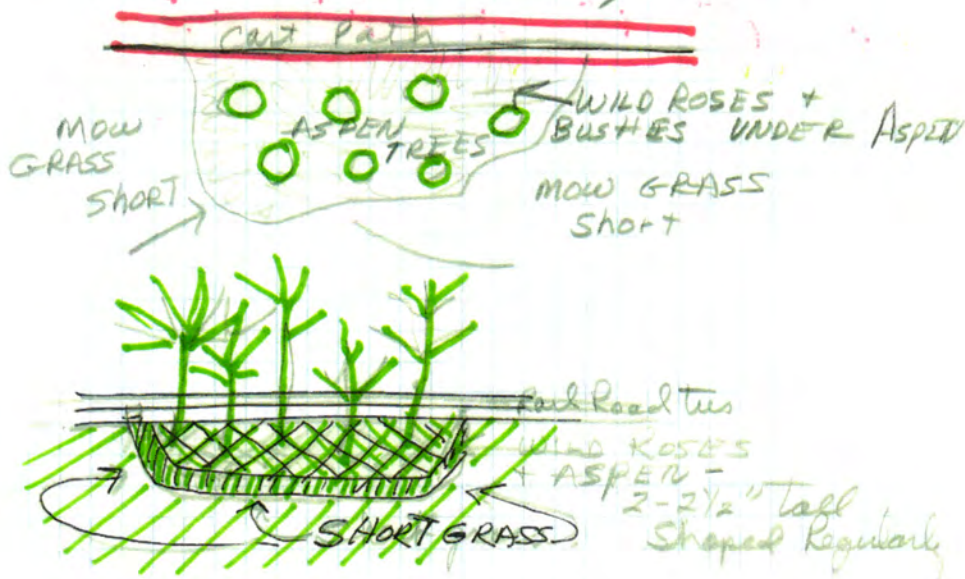
NATURAL WILD BRUSH

UNDER TREES - THICK GROWTH

(WILD ROSES AND BRUSH TO
BE KEPT 2 TO 2 1/2' high and

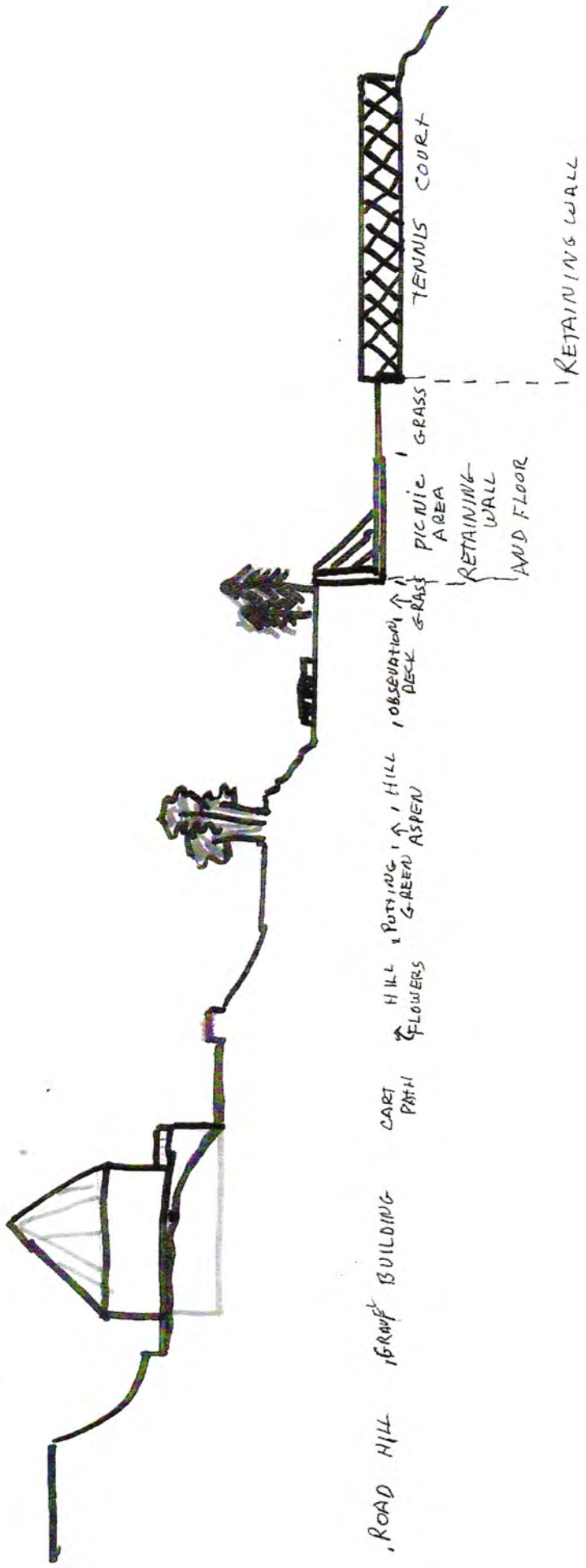
GRASS TO BE MOWED TO MAKE A
HEDGE APPEARANCE.)

#3 PRIORITY
CLEAN UP AREA
WITHOUT A LOT OF
COST



ASPEN HILLS

APPROXIMATE GRADE



ASPEN HILLS

RECREATION AREA

BELOW SURA OFFICE
PAGE 1

PROCEDURE

OBSERVATION AREA

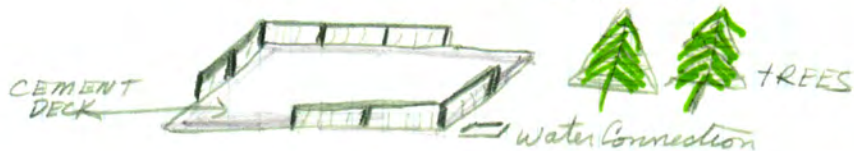
REMOVE OLD REST ROOMS
CAP WATER - SEWER - ETC.
LEAVE A WATER FAUCETT
BOX FOR CLEANING CEMENT
AREA AND HAND WATERING
SOME GRASS UNTL NEW SYSTEM
IS INSTALLED.

REPAIR CEMENT TO PERFECT RECTANGULAR
SMOOTH EXISTING SOIL
BRING IN MORE TOPSOIL
PLANT GRASS IN OLD SWIMMING POOL AREA
ORDER 2 LOUNGES

- 6 CHAIRS (STACKING)
- 1 TABLE and Umbrella

TO MATCH FURNITURE ON DECK
OF SURA OFFICE BUILDING.

BUILD A LOW RAILING AROUND CEMENT
TO GIVE AMBIANCE



A GAZEBO OR PICNIC HUT WILL CANCEL
CHANGE FOR A FUTURE SWIMMING POOL
ALSO DUPLICATING PICNIC AREA
SUGGESTED JUST ABOVE TENNIS COURTS

PROCEDURE

RETAINING WALL AND FLOOR FOR PICNIC AREA

EARTH MOVING - CUT OUT
RETAINING WALL (Cement GREY)
FLOOR Cement - Stained terracotta
TO MATCH TENNIS COURTS
FLAGSTONE PATTERN

CUT OPEN PIT FIRE AREA -
CUT SAND BOX AREA

2 BARBEQUE AREAS ON BACK WALL
(PROPANE RENTED AT OFFICE)
WATER FOUNTAIN AND FAUCETT IN AREA
HOES CONNECTION FOR CLEANING.

PLANT GRASS BETWEEN FLOOR
AND TENNIS COURT - LEVEL
FOR CROQUET OR BADMINTON AREA
LOW RETAINING WALL NEXT TO
TENNIS COURTS -

GRASS AREA CAN BE WATERED WITH
HOSE FROM WATER FOUNTAIN
UNTILL NEW WATER SYSTEM COMES

SEE DIAGRAM
DVF D

PRIORITY #4
PROBABLY LEAST
COST WITH MOST
SHOW!

PRIORITY
#5

WIDE ENOUGH
FOR COMMERCIAL
MOWER

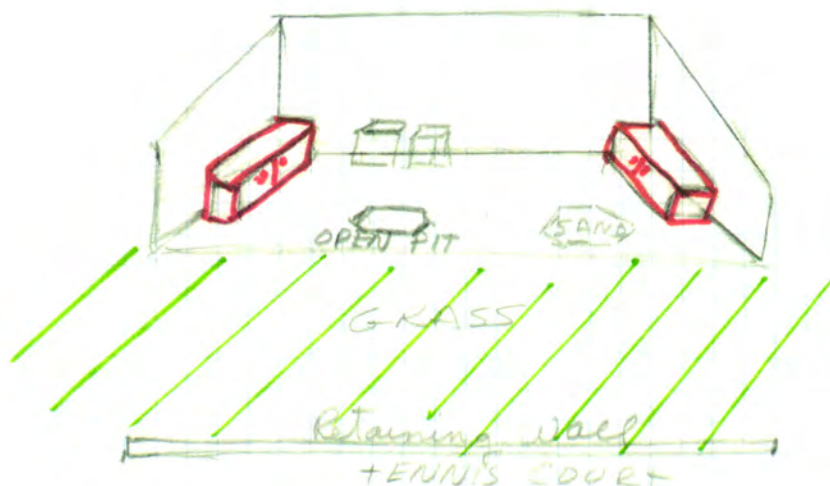
ASPEN HILLS

RECREATION AREA

BELOW SURA OFFICE

PAGE 2

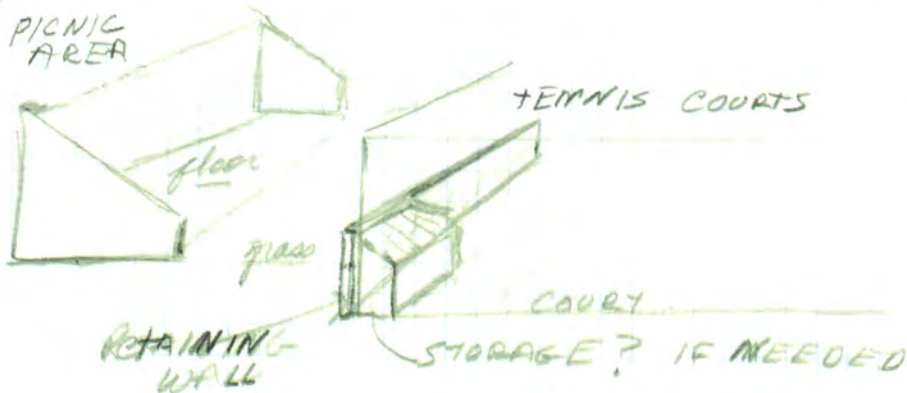
ADD STORAGE BOXES (COUNTER HEIGHT FOR FOOD PREPARATION) TO STORE CLEANING EQUIPMENT AND WINTER STORAGE OF OBSERVATION FURNITURE ON INSIDE WALL, DEPTH OF CHAIRS + LOUNGES,



PROCEDURE

Same time
as priority
#5

RETAINING WALL NEXT TO FENCE TO HOLD WATER AND MUD FROM COURT. HEIGHT TO BE DETERMINED BY NEED OF STORAGE. STORAGE TO BE CONCEALED BY WALL



INPUT
NEED HELP FROM TENNIS CLUB

(OVER)

ASPEN HILLS

RECREATION AREA
BELOW SVRA OFFICE

PAGE 3

PROCEDURE

CART-WALKING PATH
TO OBSERVATION AREA AND
PICNIC AREA
LOCATION SEE AREA DRAWING
SMOOTH AREA
ASPHALT OR CEMENT
GRAVEL - IS TOO SLIPPERY
(USE HOSES TO DETERMINE
EASIEST AND DECORATIVE PATH
TO AREA.)

NOTE: THE COMPLETE PICTURE NEEDS
DESIGN AND BALANCE FROM
VIEWABLE AREA AT DECK OF
OFFICE BUILDING.

PROCEDURE

POTTING GREEN

DIRECTLY UNDER SVRA OFFICE
NEED HELP FROM GROUNDS
MANAGER TO BUILD AND MAINTAIN.

CANNOT BUILD UNTIL NEW WATERING
SYSTEM IS INSTALLED.

SEE DRAWINGS

Priority
#6

Priority
#7

MEMORIAL

ASPEN HILLS



MOSS
ROSES

WOOD BENCHES / PLASTIC
NO BACK

PAVERS OR FLAGSTONE
ON SAND / GRAVEL BASE

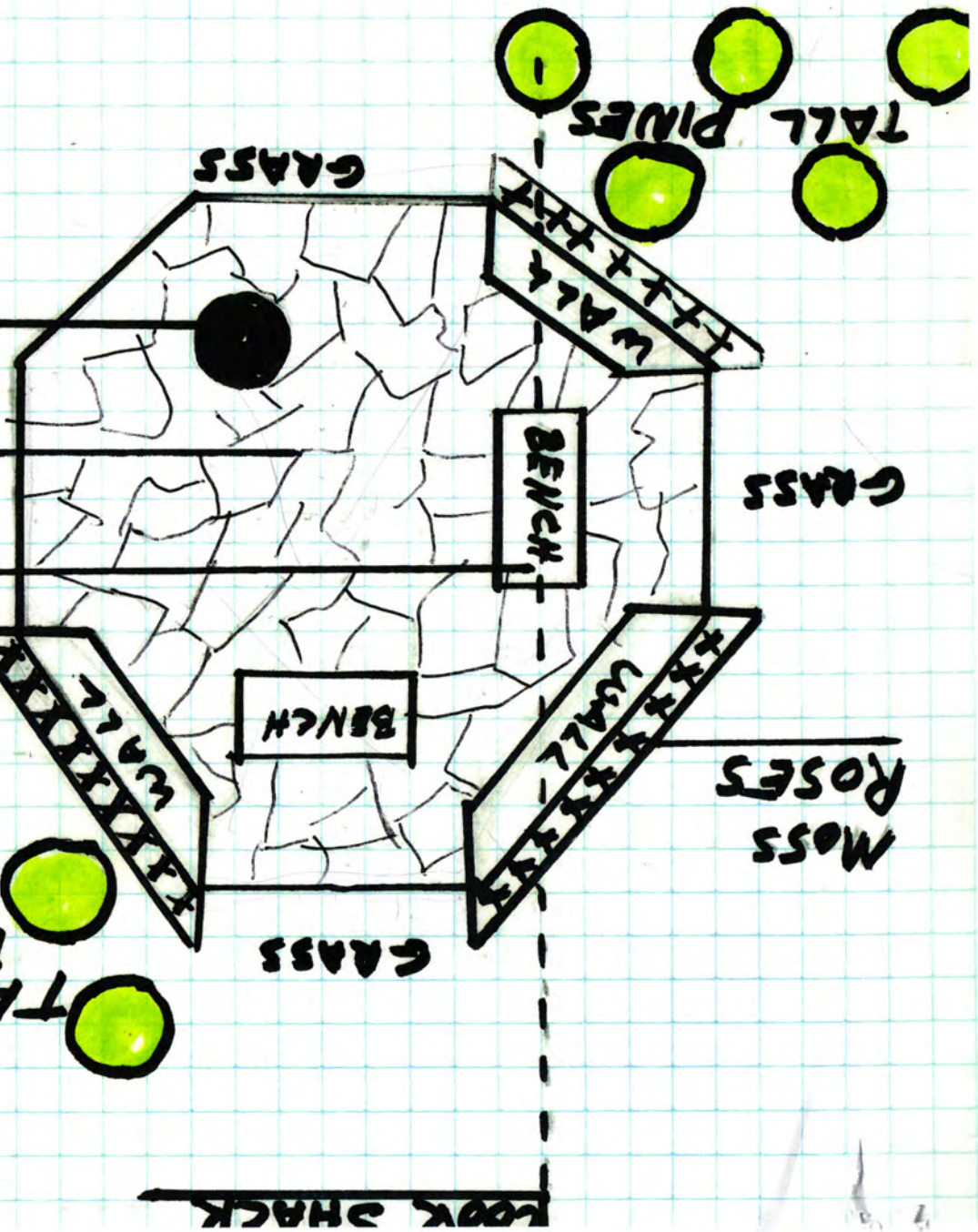
SUN DIAL

SLANT TOP
TILE OR
BRASS
NAMES



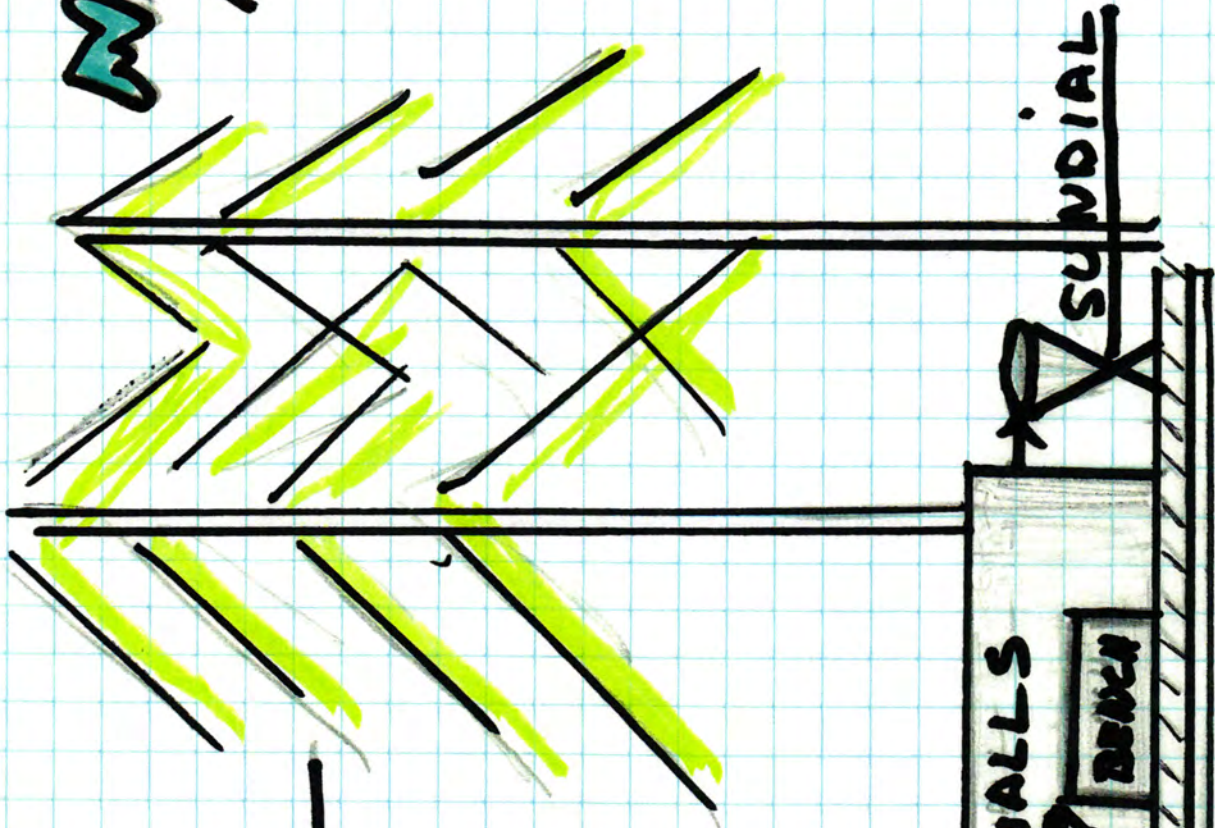
3 STONE WALLS

APPROX 16' x 20' WIDE x LONG



MEMORIAL

ASPEN HILLS



PINE TREES —

WALL HEIGHT —
SUNDIAL —
BENCH —
LAWN LEVEL —
PAVING ETC

WALLS
BENCH
SUNDIAL

~~ENTAINMENT~~ GAZEBO

ITEMS TO CONSIDER

COLORS OF GAZEBO

- ALREADY ESTABLISHED

BLEND FLINTSTONE - CEMENT EDGES -

PAVINGS FOR PATH - COLOR OF BENCHS

WITH COLOR OF GAZEBO

VERY IMPORTANT,

ONE BENCH - EACH GAZEBO - WILL BE MORE "DRAMATIC"
IN CENTER OF GAZEBO AREA (NO BACK ON BENCH)

BENCH CAN BE COVERED OR CONTAINED
WITH TABLE OR TABLE-HEIGHT "BOX"
AND BE USED FOR OTHER PURPOSES
WHEN ENTERTAINING OR SERVING,

A SECOND OR THIRD "SUN SHELTER" - FOR SERVING - PERHAPS
14 DAYS THROUGHOUT YEAR IS NOT NECESSARY...
AND WILL OBSTRUCT SCENIC BEAUTY AND LANDSCAPE
ON GRASSY AREA. PORTABLE TENTS ARE LESS
EXPENSIVE. ARCHITECTURAL STYLING WOULD CONFLICT
ALSO.

SCALE ON DRAWING - 1 Sq. = 1 FT

MEMORIAL

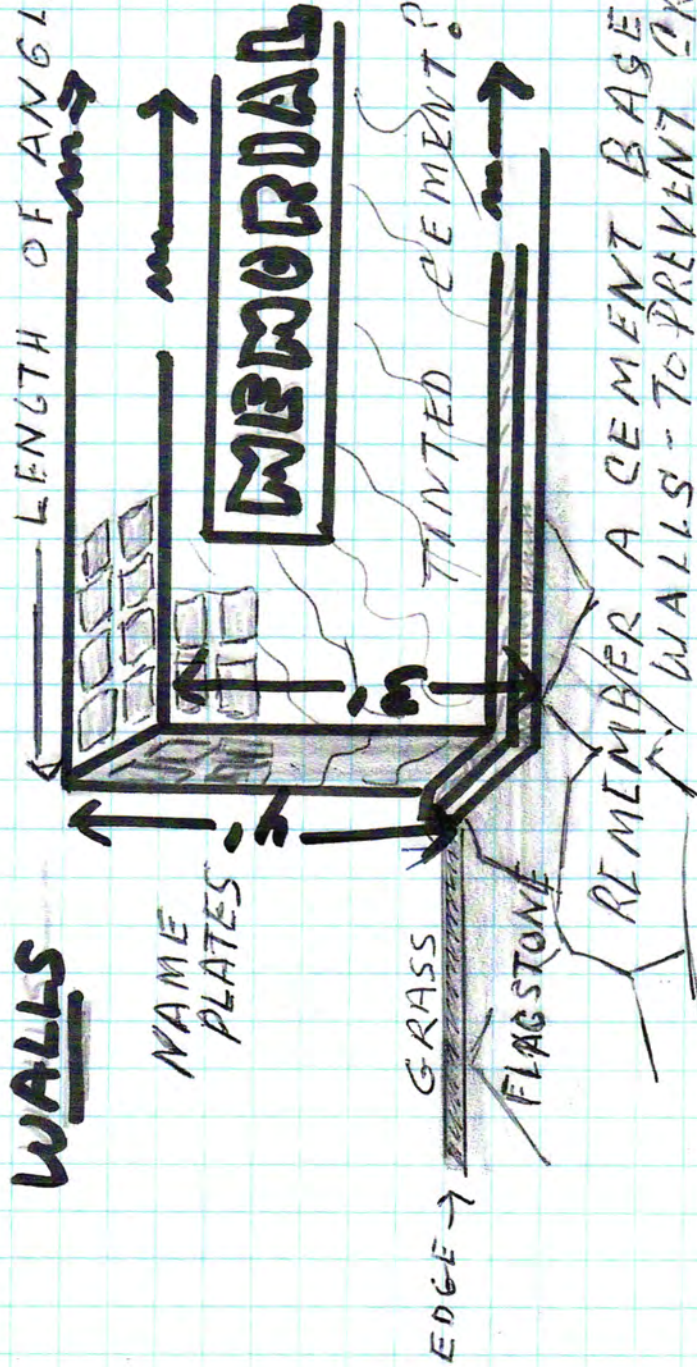
ITEMS TO CONSIDER

COLORS

FLAGSTONE - CEMENT WALLS - SUNDIAL -
CEMENT EDGES - BENCHES - NEED TO
BLEND - (NO BLUE GREYS WITH WARM BEIGE
CEMENT CAN BE TINTED COLOR DESIRED.)

CONSIDER NAME PLATE - COLORS AND SIZES -
WHEN DESIGNING WALLS

WALLS



ONLY ONE WALL
NEEDS
'MEMORIAL'
FACING INTO CEN

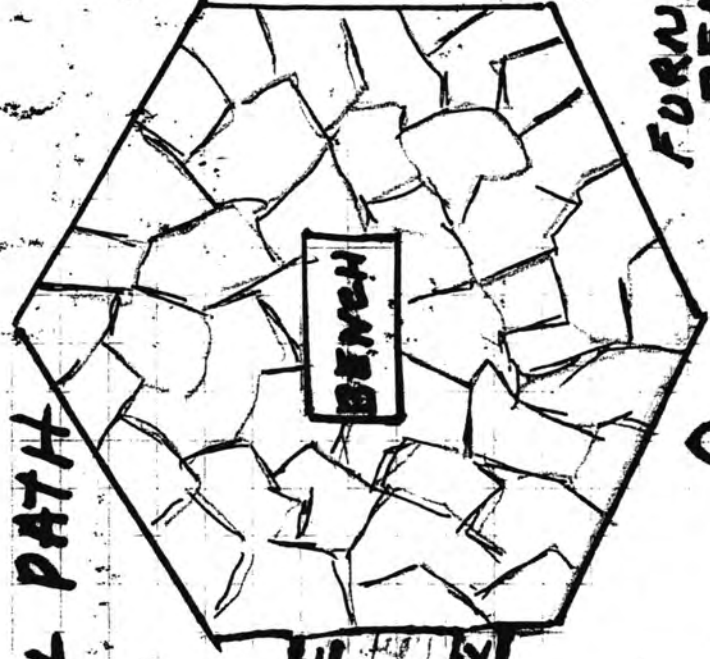
REMEMBER A CEMENT BASE FOR MEMORIAL.
WALLS - TO PREVENT CRACKING & SETTLING.

A TEXTURE OR STUCCO MIGHT BE APPLIED FOR
CURRENT APPEARANCE UNTILL NAMES ARE
ADDED.

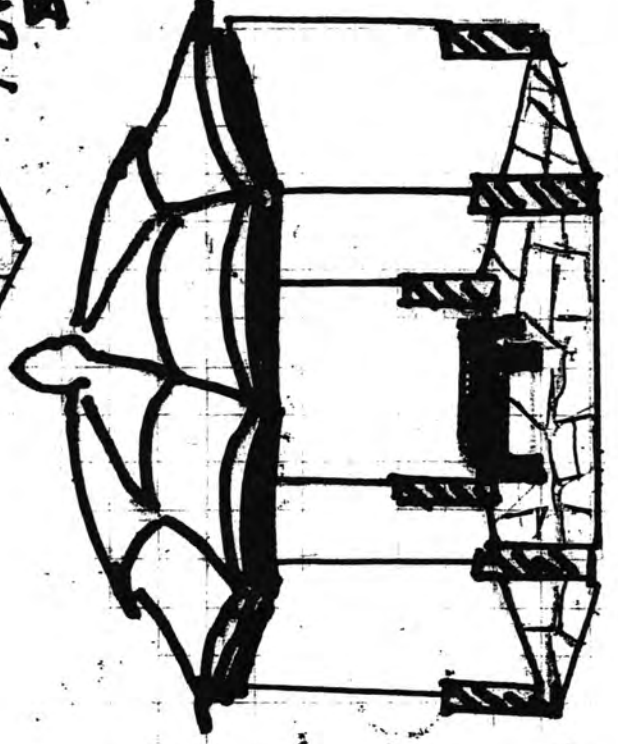
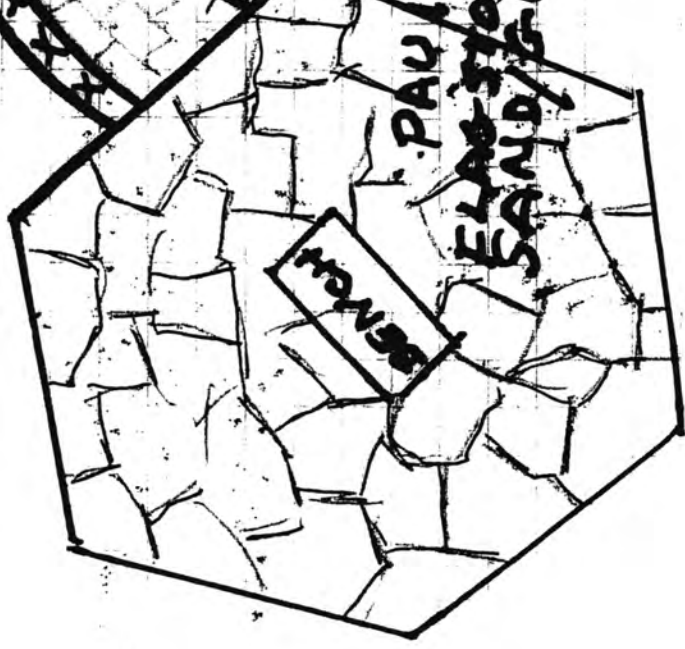
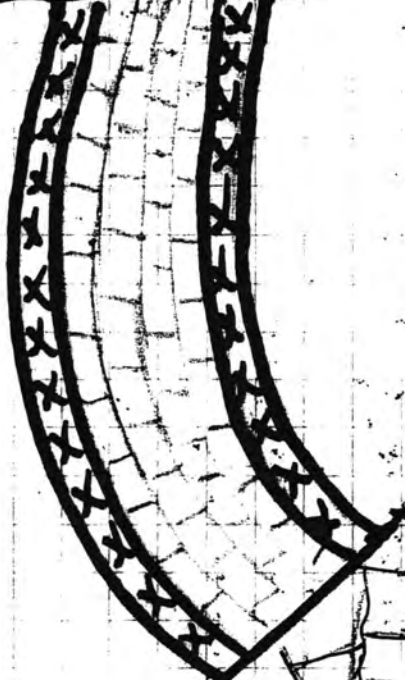
ENTERTAINMENT GAZEBOS OR

FLOWERS - NOWATER
MOSS ROSES XXX
IRIS XXX

MEMORIAL PATH



FURNITURE
BENCH?

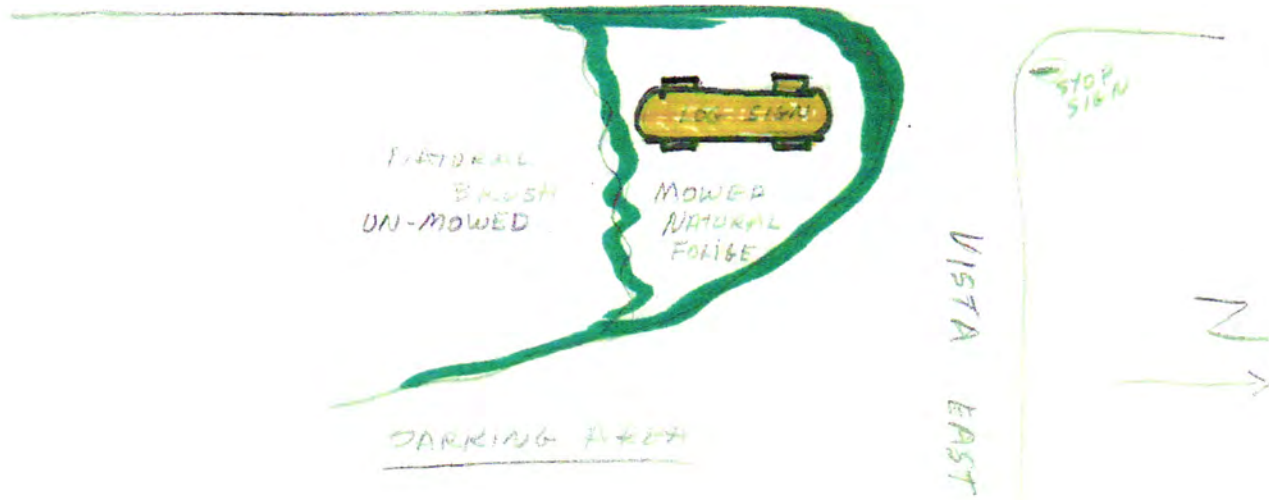


14' 7" x 11' 3" HI



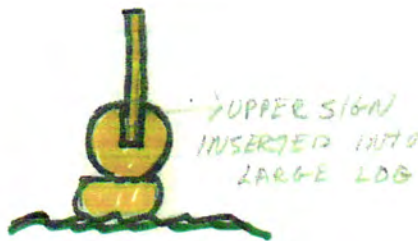
SIGN SUGGESTION
ASPEN HILLS
VISTA WEST/VISTA EAST

VISTA WEST



FRONT VIEW

SIDE VIEW



LOG SIGN RELATES TO SVR ENTRANCE SIGN.

LETTERING ON BOTH SIDES

**VISTA EAST
VISTA WEST
CORNER**

PURPOSE:

ADVERTISING IS VERY IMPORTANT IN PROMOTING A PROFIT GENERATING BUSINESS. MANY GUESTS HAVE TROUBLE LOCATING THE PRO-SHOP AND OFFICE.

MARILYN HASSELL
983-4947