

# ASPEN HILLS

## ABOVE #9 HOLE

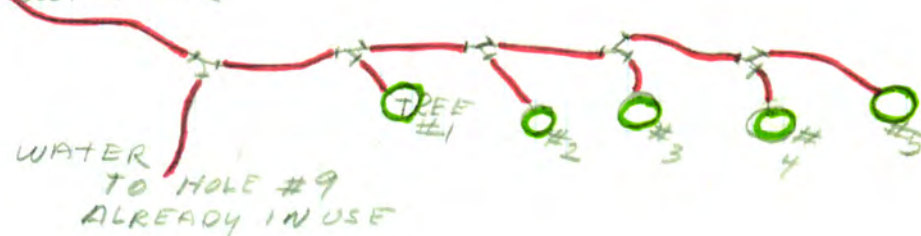
### PROCEDURE

#### PLANT 5 PINE TREES

LOCATION - SEE DRAWING  
CHOOSE 5 TREES - MATCH FOR  
SIZE SHAPE and SPECIES  
PLANT - SPACE BETWEEN TREES  
AND CART PATH TO ALLOW  
FOR COMMERCIAL MOWER.  
WATER WITH HOSE FROM COOK  
SHACK UNTILL TREES ARE  
ESTABLISHED

USE LAWN HOSES WITH "Y" CONNECTION

COOKSHACK



LEAVE SOIL BASIN AROUND TREE  
TRUNKS TO HOLD WATER

WATER REGULARLY  
SMOOTH LANDSCAPE FOR MACHINE  
MOWING

### PROCEDURE

#### REPAIR CART PATH

LOCATION ALONG COOKSHACK  
OBTAIN NEW NEEDED RAILROAD TIES,  
REMOVE ROTTEN RAILROAD TIES and DISCARD.  
PLACE REUSABLE TIES ON CART PATH.  
DIG GOOD FOUNDATION FOR REPLACEMENT.  
ALIGN NEW AND REUSABLE TIES ON  
LEVEL BASE.

DRILL HOLES AND INSERT METAL RODS  
OR EXTRA LONG SPIKES and/or  
METAL FENCE POST (with FENCE  
POUNDER) TO HOLD RRTIES IN LINE.  
FILL SPACE BETWEEN TIES AND  
CART PATH WITH GRAVEL AND TOP  
SOIL AND TAMP TIGHTLY.

Rail Road TIES COULD BE UP TO 6 INCHES  
HIGHER THAN EXISTING CART PATH.

NOTE: "THE ORIGINAL RAIL ROAD TIES  
LASTED MORE THAN 30 YEARS.  
REPLACEMENTS CAN LAST UNTIL  
SVRA CAN AFFORD A NEW LOOK"

(OVER)

#1 PRIORITY  
TAKES TIME FOR  
TREES TO GROW

#2 PRIORITY  
UNSIGHTLY FOR  
EVERYONE PLAYING  
ASPEN HILLS.

# ASPEN HILLS

ABOVE #9 HOLE

CONTINUED

## PROCEDURE

GREEN AREA BELOW CART PATH  
ASPEN TREE GROUP

REMOVE OR CAP OLD WATER  
CONNECTION, and COVER.

BRING IN TOP SOIL AND SMOOTH.

REMOVE DEBRIS

ADD WILD ROSE BUSHES AND

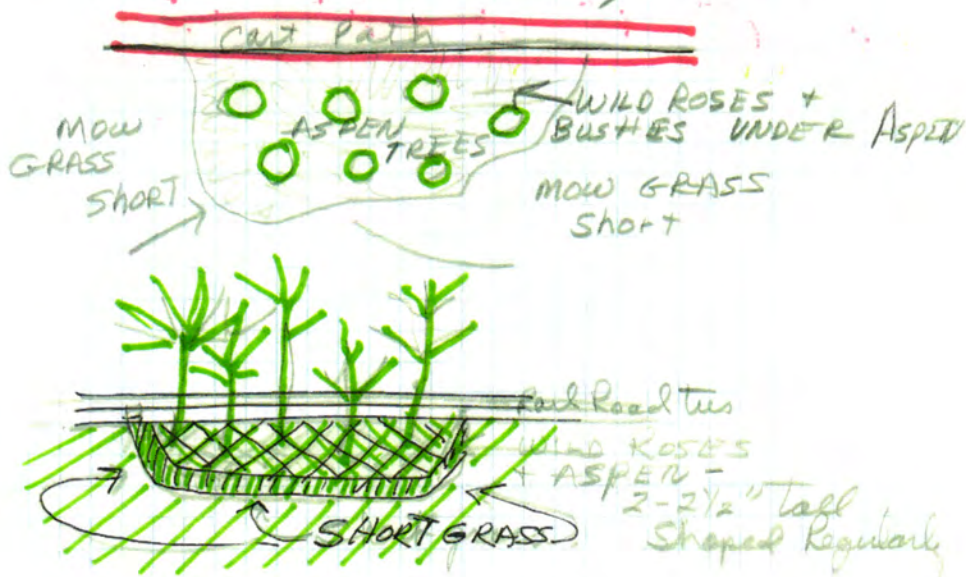
NATURAL WILD BRUSH

UNDER TREES - THICK GROWTH

(WILD ROSES AND BRUSH TO  
BE KEPT 2 TO 2 1/2' high and

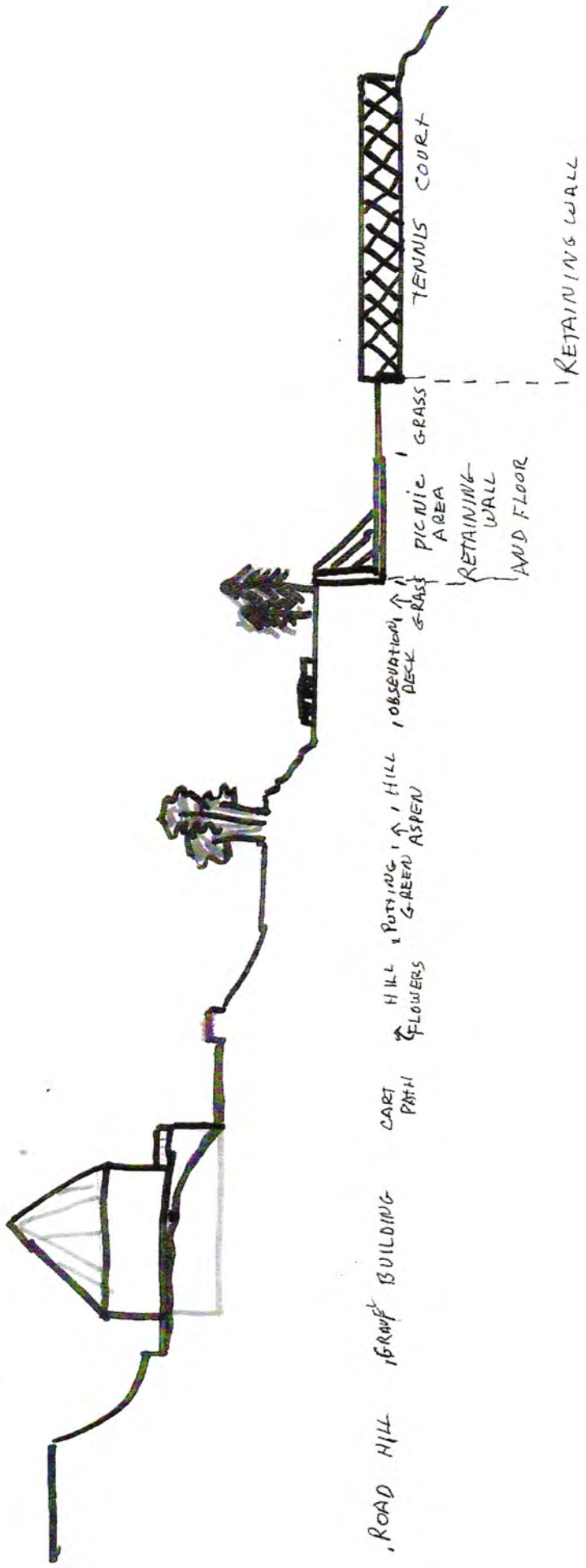
GRASS TO BE MOWED TO MAKE A  
HEDGE APPEARANCE.)

#3 PRIORITY  
CLEAN UP AREA  
WITHOUT A LOT OF  
COST



# ASPEN HILLS

APPROXIMATE GRADE





# ASPEN HILLS

## RECREATION AREA

BELOW SURA OFFICE  
PAGE 1

### PROCEDURE

#### OBSERVATION AREA

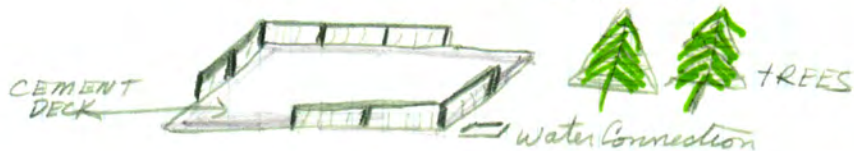
REMOVE OLD REST ROOMS  
CAP WATER - SEWER - ETC.  
LEAVE A WATER FAUCETT  
BOX FOR CLEANING CEMENT  
AREA AND HAND WATERING  
SOME GRASS UNTL NEW SYSTEM  
IS INSTALLED.

REPAIR CEMENT TO PERFECT RECTANGULAR  
SMOOTH EXISTING SOIL  
BRING IN MORE TOPSOIL  
PLANT GRASS IN OLD SWIMMING POOL AREA  
ORDER 2 LOUNGES

- 6 CHAIRS (STACKING)
- 1 TABLE and Umbrella

TO MATCH FURNITURE ON DECK  
OF SURA OFFICE BUILDING.

BUILD A LOW RAILING AROUND CEMENT  
TO GIVE AMBIANCE



A GAZEBO OR PICNIC HUT WILL CANCEL  
CHANGE FOR A FUTURE SWIMMING POOL  
ALSO DUPLICATING PICNIC AREA  
SUGGESTED JUST ABOVE TENNIS COURTS

### PROCEDURE

#### RETAINING WALL AND FLOOR FOR PICNIC AREA

EARTH MOVING - CUT OUT  
RETAINING WALL (Cement GREY)  
FLOOR Cement - Stained terracotta  
TO MATCH TENNIS COURTS  
FLAGSTONE PATTERN

CUT OPEN PIT FIRE AREA -  
CUT SAND BOX AREA

2 BARBEQUE AREAS ON BACK WALL  
(PROPANE RENTED AT OFFICE)  
WATER FOUNTAIN and FAUCETT IN AREA  
HOES CONNECTION FOR CLEANING.

PLANT GRASS BETWEEN FLOOR  
AND TENNIS COURT - LEVEL  
FOR CROQUET OR BADMINTON AREA  
LOW RETAINING WALL NEXT TO  
TENNIS COURTS -

GRASS AREA CAN BE WATERED WITH  
HOSE FROM WATER FOUNTAIN  
UNTILL NEW WATER SYSTEM COMES

SEE DIAGRAM  
DVF D

PRIORITY #4  
PROBABLY LEAST  
COST WITH MOST  
SHOW!

PRIORITY  
#5

WIDE ENOUGH  
FOR COMMERCIAL  
MOWER

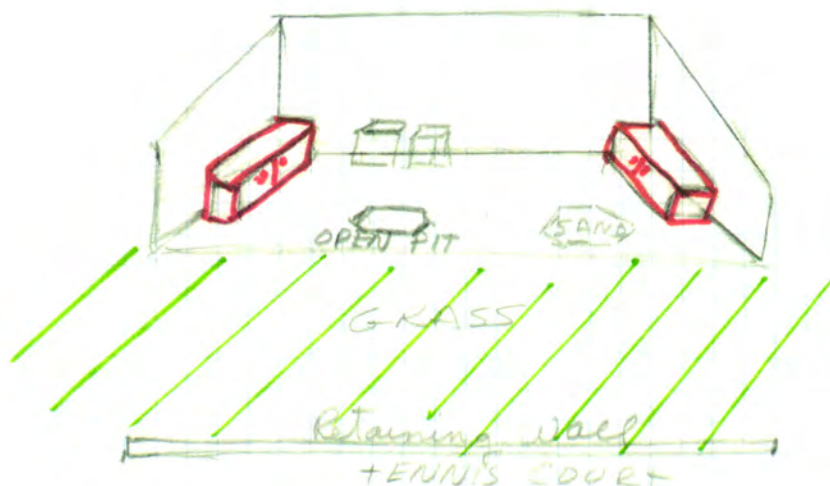
# ASPEN HILLS

## RECREATION AREA

BELOW SURA OFFICE

PAGE 2

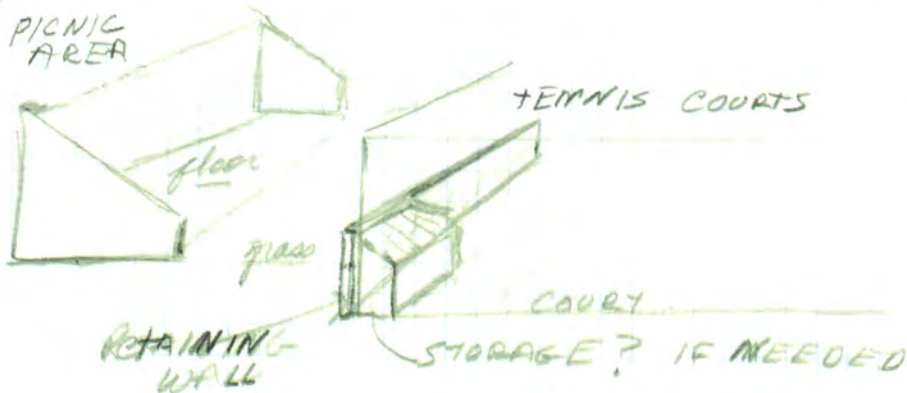
ADD STORAGE BOXES (COUNTER HEIGHT FOR FOOD PREPARATION) TO STORE CLEANING EQUIPMENT AND WINTER STORAGE OF OBSERVATION FURNITURE ON INSIDE WALL, DEPTH OF CHAIRS + LOUNGES,



## PROCEDURE

Same time  
as priority  
#5

RETAINING WALL NEXT TO FENCE TO HOLD WATER AND MUD FROM COURT. HEIGHT TO BE DETERMINED BY NEED OF STORAGE. STORAGE TO BE CONCEALED BY WALL



INPUT  
NEED HELP FROM TENNIS CLUB

(OVER)



# ASPEN HILLS

RECREATION AREA  
BELOW SVRA OFFICE

PAGE 3

## PROCEDURE

CART-WALKING PATH  
TO OBSERVATION AREA AND  
PICNIC AREA  
LOCATION SEE AREA DRAWING  
SMOOTH AREA  
ASPHALT OR CEMENT  
GRAVEL - IS TOO SLIPPERY  
(USE HOSES TO DETERMINE  
EASIEST AND DECORATIVE PATH  
TO AREA.)

NOTE: THE COMPLETE PICTURE NEEDS  
DESIGN AND BALANCE FROM  
VIEWABLE AREA AT DECK OF  
OFFICE BUILDING.

## PROCEDURE

POTTING GREEN

DIRECTLY UNDER SVRA OFFICE  
NEED HELP FROM GROUNDS  
MANAGER TO BUILD AND MAINTAIN.  
CANNOT BUILD UNTIL NEW WATERING  
SYSTEM IS INSTALLED.  
SEE DRAWINGS

Priority  
#6

Priority  
#7



# MEMORIAL

ASPEN HILLS



MOSS  
ROSES

WOOD BENCHES / PLASTIC  
NO BACK

PAVERS OR FLAGSTONE  
ON SAND / GRAVEL BASE

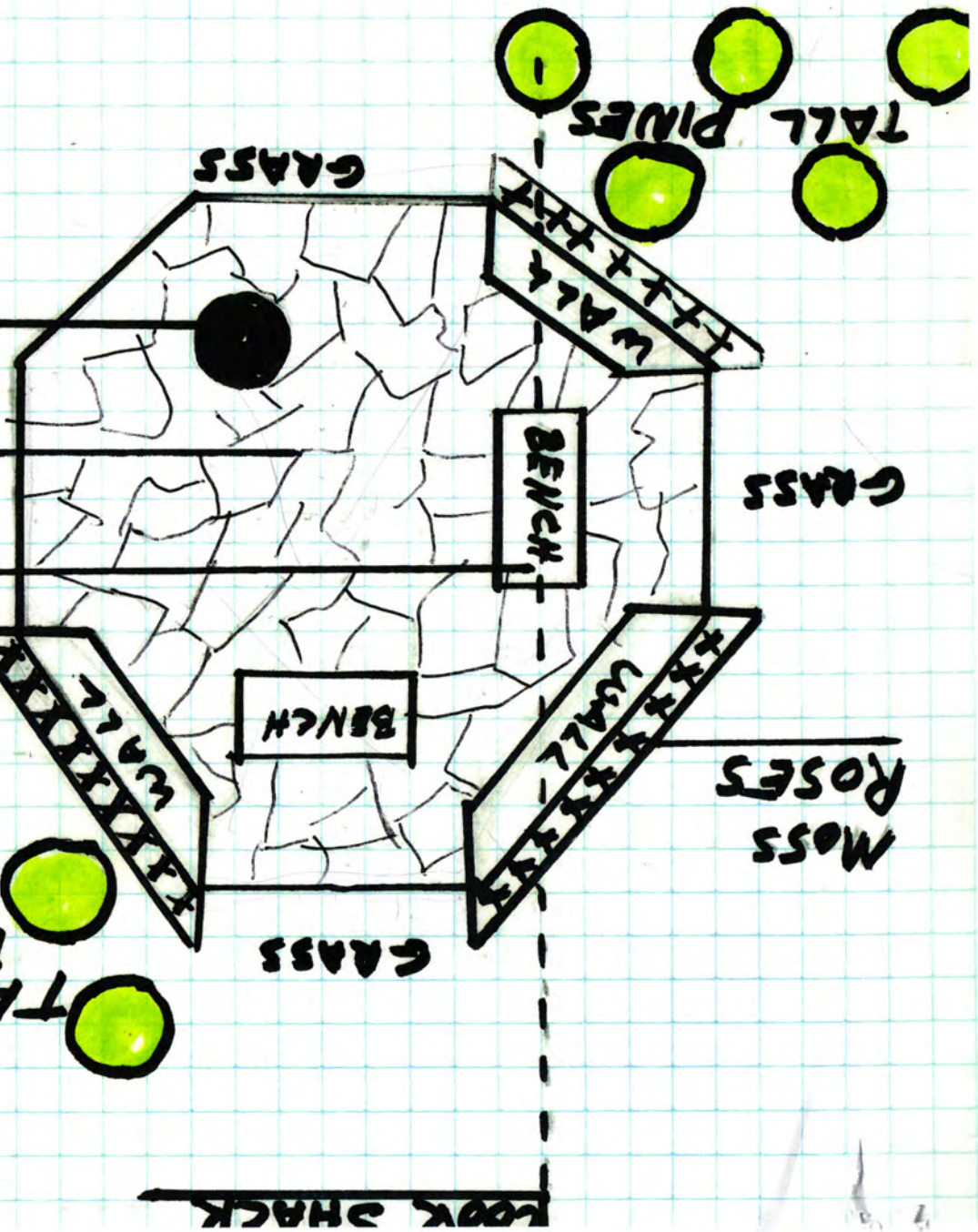
SUN DIAL

SLANT TOP  
TILE OR  
BRASS  
NAMES



3 STONE WALLS

APPROX 16' x 20' WIDE x LONG



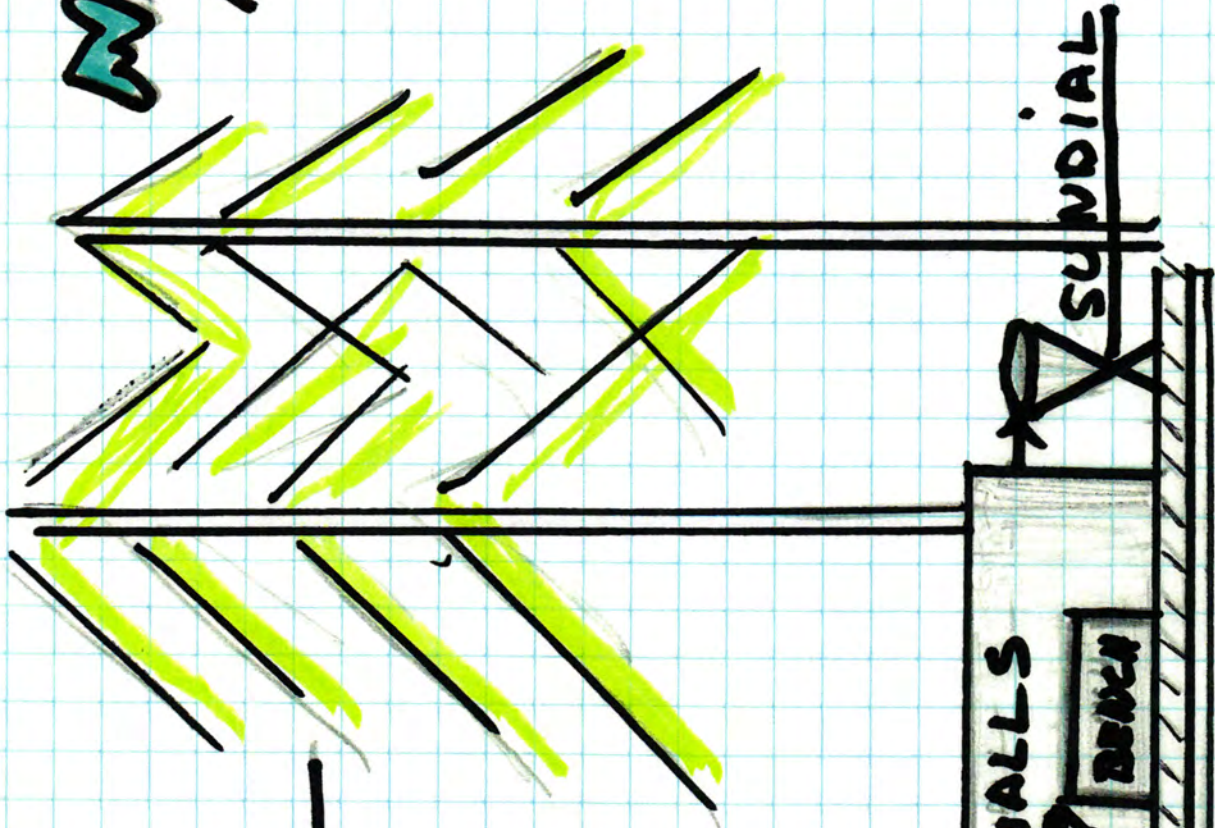
TALL PINES





# MEMORIAL

ASPEN HILLS



PINE TREES —

WALL HEIGHT —  
SUNDIAL —>  
BENCH —  
LAWN LEVEL —  
PAVING ETC

WALLS

BENCH

SUNDIAL



# ~~ENTAINMENT~~ GAZEBO

## ITEMS TO CONSIDER

### COLORS OF GAZEBO

- ALREADY ESTABLISHED

BLEND FLINTSTONE - CEMENT EDGES -

PAVINGS FOR PATH - COLOR OF BENCHS

WITH COLOR OF GAZEBO

VERY IMPORTANT,

ONE BENCH - EACH GAZEBO - WILL BE MORE "DRAMATIC"  
IN CENTER OF GAZEBO AREA (NO BACK ON BENCH)

BENCH CAN BE COVERED OR CONTAINED  
WITH TABLE OR TABLE-HEIGHT "BOX"  
AND BE USED FOR OTHER PURPOSES  
WHEN ENTERTAINING OR SERVING,

A SECOND OR THIRD "SUN SHELTER" - FOR SERVING - PERHAPS  
14 DAYS THROUGHOUT YEAR IS NOT NECESSARY...  
AND WILL OBSTRUCT SCENIC BEAUTY AND LANDSCAPE  
ON GRASSY AREA. PORTABLE TENTS ARE LESS  
EXPENSIVE. ARCHITECTURAL STYLING WOULD CONFLICT  
ALSO.

SCALE ON DRAWING - 1 Sq. = 1 FT



# MEMORIAL

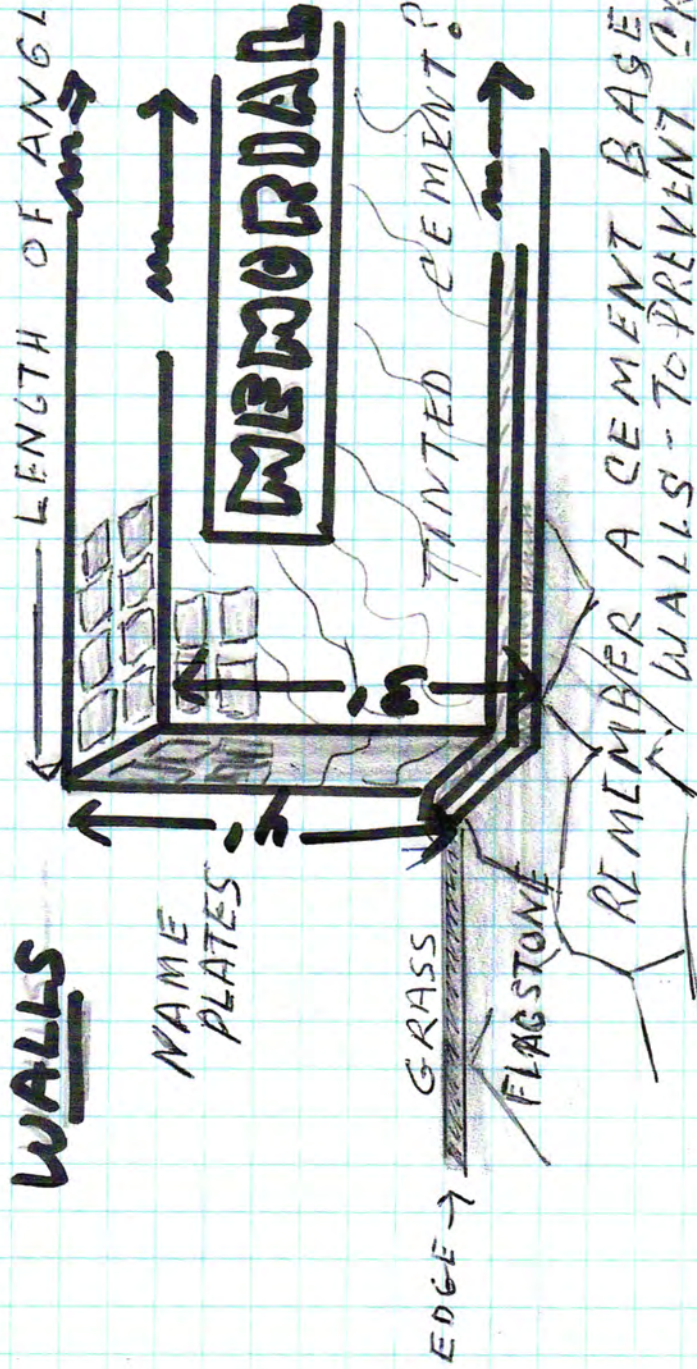
## ITEMS TO CONSIDER

### COLORS

FLAGSTONE - CEMENT WALLS - SUNDIAL -  
CEMENT EDGES - BENCHES - NEED TO  
BLEND - (NO BLUE GREYS WITH WARM BEIGE  
CEMENT CAN BE TINTED COLOR DESIRED.)

CONSIDER NAME PLATE - COLORS AND SIZES -  
WHEN DESIGNING WALLS

### WALLS



ONLY ONE WALL  
NEEDS  
'MEMORIAL'  
FACING INTO CEN

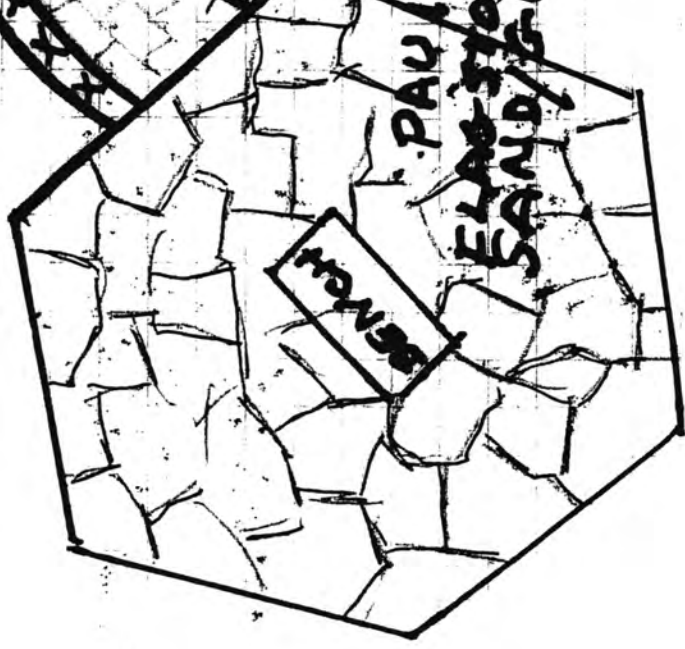
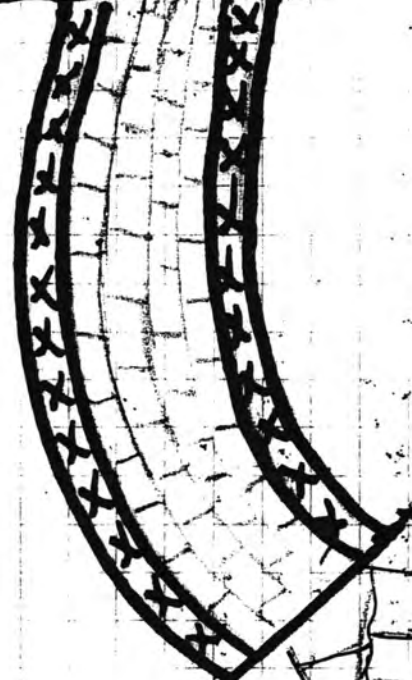
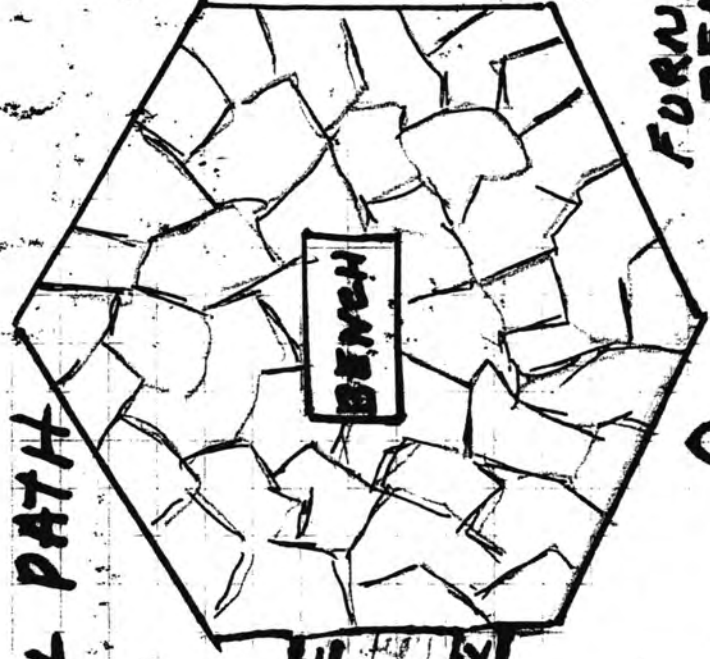
A TEXTURE OR STUCCO MIGHT BE APPLIED FOR  
CURRENT APPEARANCE UNTILL NAMES ARE  
ADDED.



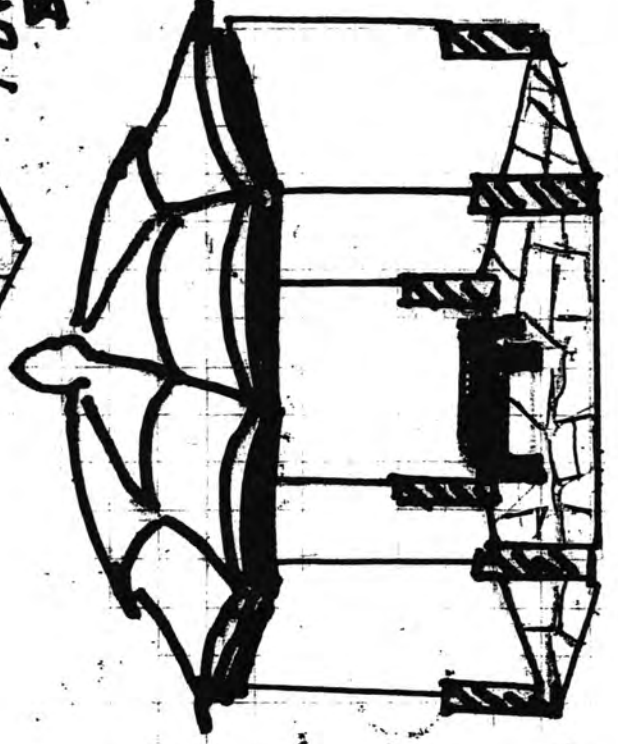
# ENTERTAINMENT GAZEBO OR

FLOWERS - NOWATER  
MOSS ROSES XXX  
IRIS XXX

MEMORIAL PATH



FURNITURE  
BENCH?

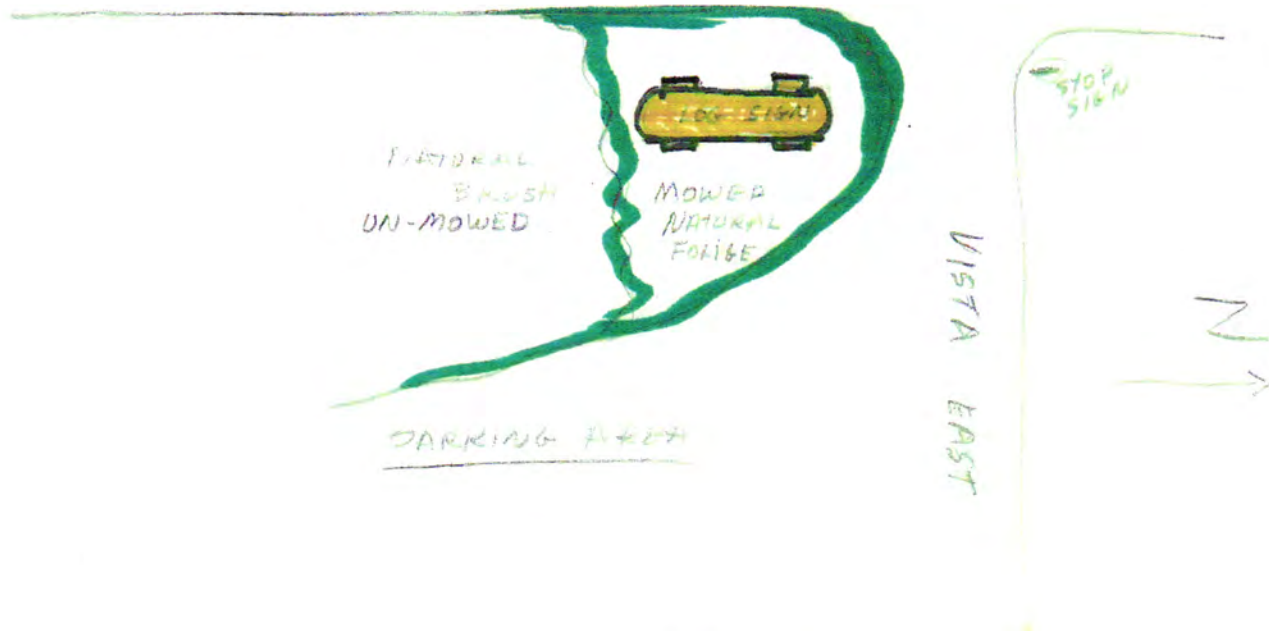


14' 7" x 11' 3" HI



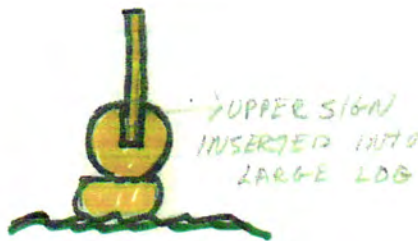
SIGN SUGGESTION  
ASPEN HILLS  
VISTA WEST / VISTA EAST

VISTA WEST



FRONT VIEW

SIDE VIEW



LOG SIGN RELATES TO SVR ENTRANCE SIGN.

LETTERING ON BOTH SIDES

# VISTA EAST VISTA WEST CORNER

### PURPOSE:

ADVERTISING IS VERY IMPORTANT IN PROMOTING A PROFIT GENERATING BUSINESS. MANY GUESTS HAVE TROUBLE LOCATING THE PRO-SHOP AND OFFICE.

MARILYN HASSELL  
983-4947