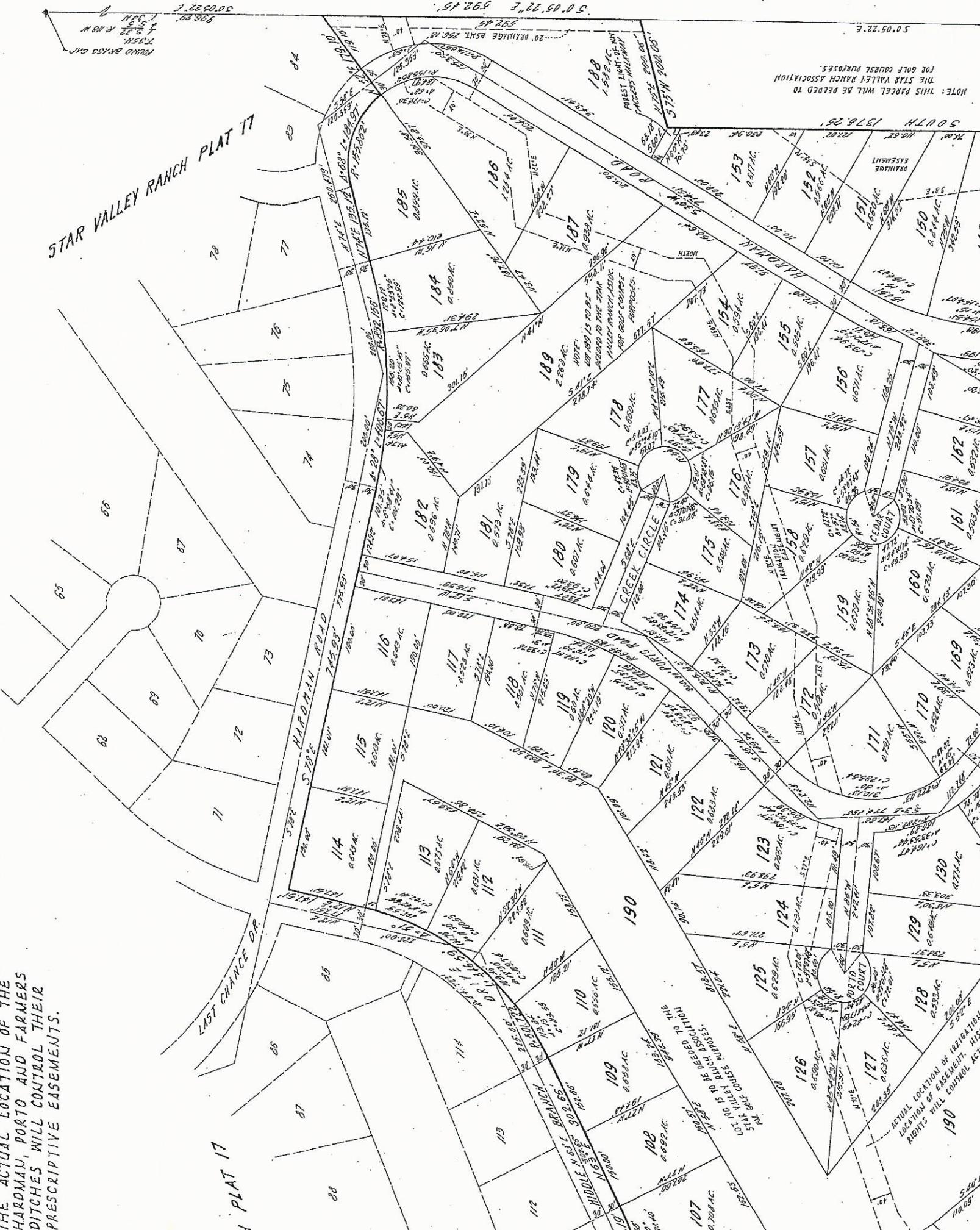


THE ACTUAL LOCATION OF THE HARDMAN, PORTO AND FARMERS DITCHES WILL CONTROL THEIR PRESCRIPTIVE EASEMENTS.

STAR VALLEY RANCH PLAT 17



NOTE: THIS PARCEL WILL BE DEEDED TO THE STAR VALLEY RANCH ASSOCIATION FOR GOLF COURSE PURPOSES.

ACTUAL LOCATION OF TRAILGATION RIGHTS WILL CONTROL ACTUAL RIGHTS